



Test Report

No.: CY/2013/70831A Date : 2013/08/02 Page : 1 of 3

YILONG PLASTIC CO., LTD



NO. 237, ABAO LN., DAFENG VIL. YUANLIN TOWNSHIP, CHANGHUA COUNTY 510, TAIWAN (R. O. C.)

The following samples was/were submitted and identified by/on behalf of the applicant as :

Sample Submitted By : YILONG PLASTIC CO., LTD
 Sample Description : PLASTIC BAGS
 Sample Material : LDPE
 Sample Receiving Date : 2013/07/15
 Testing Period : 2013/07/15 TO 2013/07/29

=====
Test Requested : Testing as per Commission Regulation (EU) No 10/2011 of 14 January 2011 and hence Article 3 of European Regulation No. 1935/2004.

Test Method : Please refer to next page(s).

Test Result(s) : Please refer to next page(s).

Summary :

(1)	Plastic - Specific Migration of Heavy Metal	PASS
(2)	Overall migration - 3% Acetic Acid	PASS



James Lu Sr. Supervisor
 Signed for and on behalf of
 SGS TAIWAN LTD
 Chemical Laboratory - Taipei

This document is issued by the Company subject to its General Conditions of Service printed overleaf, available on request or accessible at <http://www.sgs.com/en/Terms-and-Conditions.aspx> and, for electronic format documents, subject to Terms and Conditions for Electronic Documents at <http://www.sgs.com/en/Terms-and-Conditions/Termse-Documents.aspx>. Attention is drawn to the limitation of liability, indemnification and jurisdiction issues defined therein. Any holder of this document is advised that information contained hereon reflects the Company's findings at the time of its intervention only and within the limits of client's instruction, if any. The Company's sole responsibility is to its Client and this document does not exonerate parties to a transaction from exercising all their rights and obligations under the transaction documents. This document cannot be reproduced, except in full, without prior written approval of the Company. Any unauthorized alteration, forgery or falsification of the content or appearance of this document is unlawful and offenders may be prosecuted to the fullest extent of the law. Unless otherwise stated the results shown in this test report refer only to the sample(s) tested.

Test Report

No.: CY/2013/70831A Date : 2013/08/02 Page : 2 of 3

YILONG PLASTIC CO., LTD

NO. 237, ABAO LN., DAFENG VIL. YUANLIN TOWNSHIP, CHANGHUA COUNTY 510, TAIWAN (R. O. C.)



Test Result(s)

PART NAME No.1 : TRANSPARENT PLASTIC BAG

(1) Plastic - Specific Migration of Heavy Metal

PASS

Test Item (s)	Unit	Method	MDL	Result	Limit
				No.1	
Barium(Ba)	mg/kg	Sample preparation in 3% acetic acid at XX°C for XX hours with reference to Commission Regulation (EU) No 10/2011 of 14 January 2011 Annex III and Annex V for selection of condition and EN13130-1:2004 for selection of test method; followed by analysis using ICP-AES.	0.25	n.d.	1
Cobalt(Co)	mg/kg		0.01	n.d.	0.05
Copper(Cu)	mg/kg		0.25	n.d.	5
Iron(Fe)	mg/kg		0.25	n.d.	48
Lithium(Li)	mg/kg		0.5	n.d.	0.6
Manganese(Mn)	mg/kg		0.25	n.d.	0.6
Zinc(Zn)	mg/kg		0.5	n.d.	25

(2) Overall Migration

PASS

Simulant Used	Unit	Method	MDL	Result	Limit
				No.1	
3% Acetic Acid (W/V) Aqueous Solution	mg/dm ²	With reference to Commission Regulation (EU) No 10/2011 of 14 January 2011 Annex III and Annex V for selection of condition and EN1186-1:2002 for selection of test method.	3.0	n.d.	10

Remark:

- A. Test condition & simulant were specified by client: 20°C, 10Days
- B. Analytical tolerance of aqueous simulants is 1 mg/dm².

Note:

1. mg/kg = milligram per kilogram of foodstuff in contact with
2. mg/dm² = milligram per square decimeter
3. n.d. = Not Detected
4. MDL = Method Detection Limit
5. Test condition & simulant were specified by client.
6. The test data is obtained by considering the articles intended for repeated use as per described in Commission Regulation (EU) No 10/2011 of 14 January 2011 Annex V.
7. Limit is according to Commission Regulation (EU) No 10/2011 of 14 January 2011.

Test Report

No.: CY/2013/70831A Date : 2013/08/02 Page : 3 of 3

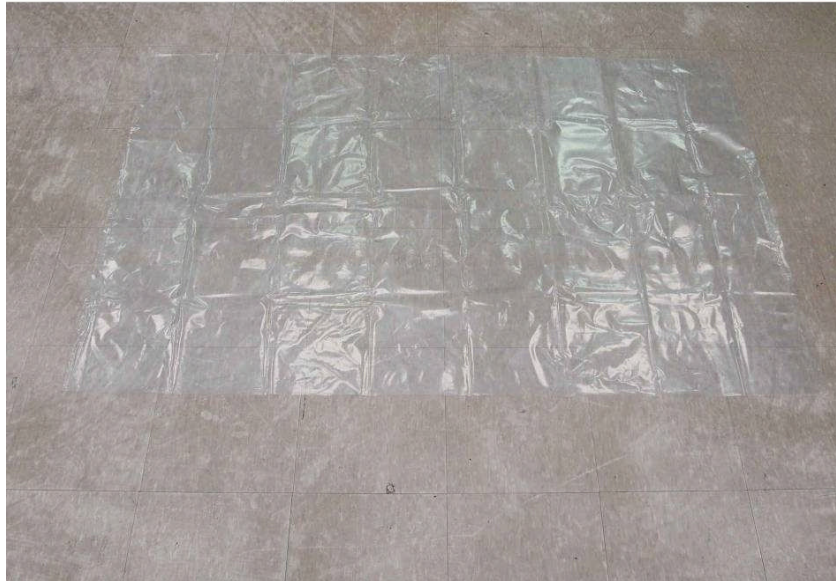
YILONG PLASTIC CO., LTD

NO. 237, ABAO LN., DAFENG VIL. YUANLIN TOWNSHIP, CHANGHUA COUNTY 510, TAIWAN (R. O. C.)



* The tested sample / part is marked by an arrow if it's shown on the photo. *

CY/2013/70831



** End of Report **

This document is issued by the Company subject to its General Conditions of Service printed overleaf, available on request or accessible at <http://www.sgs.com/en/Terms-and-Conditions.aspx> and, for electronic format documents, subject to Terms and Conditions for Electronic Documents at <http://www.sgs.com/en/Terms-and-Conditions/Termse-Documents.aspx>. Attention is drawn to the limitation of liability, indemnification and jurisdiction issues defined therein. Any holder of this document is advised that information contained hereon reflects the Company's findings at the time of its intervention only and within the limits of client's instruction, if any. The Company's sole responsibility is to its Client and this document does not exonerate parties to a transaction from exercising all their rights and obligations under the transaction documents. This document cannot be reproduced, except in full, without prior written approval of the Company. Any unauthorized alteration, forgery or falsification of the content or appearance of this document is unlawful and offenders may be prosecuted to the fullest extent of the law. Unless otherwise stated the results shown in this test report refer only to the sample(s) tested.